

Customer :

customer

Customer part :

customer part

Comment :

Comment

S1=0.7

S2=12.18

Tmax=441

Tp S2=480.0

PI=0.05

HI=240

Sample =9107

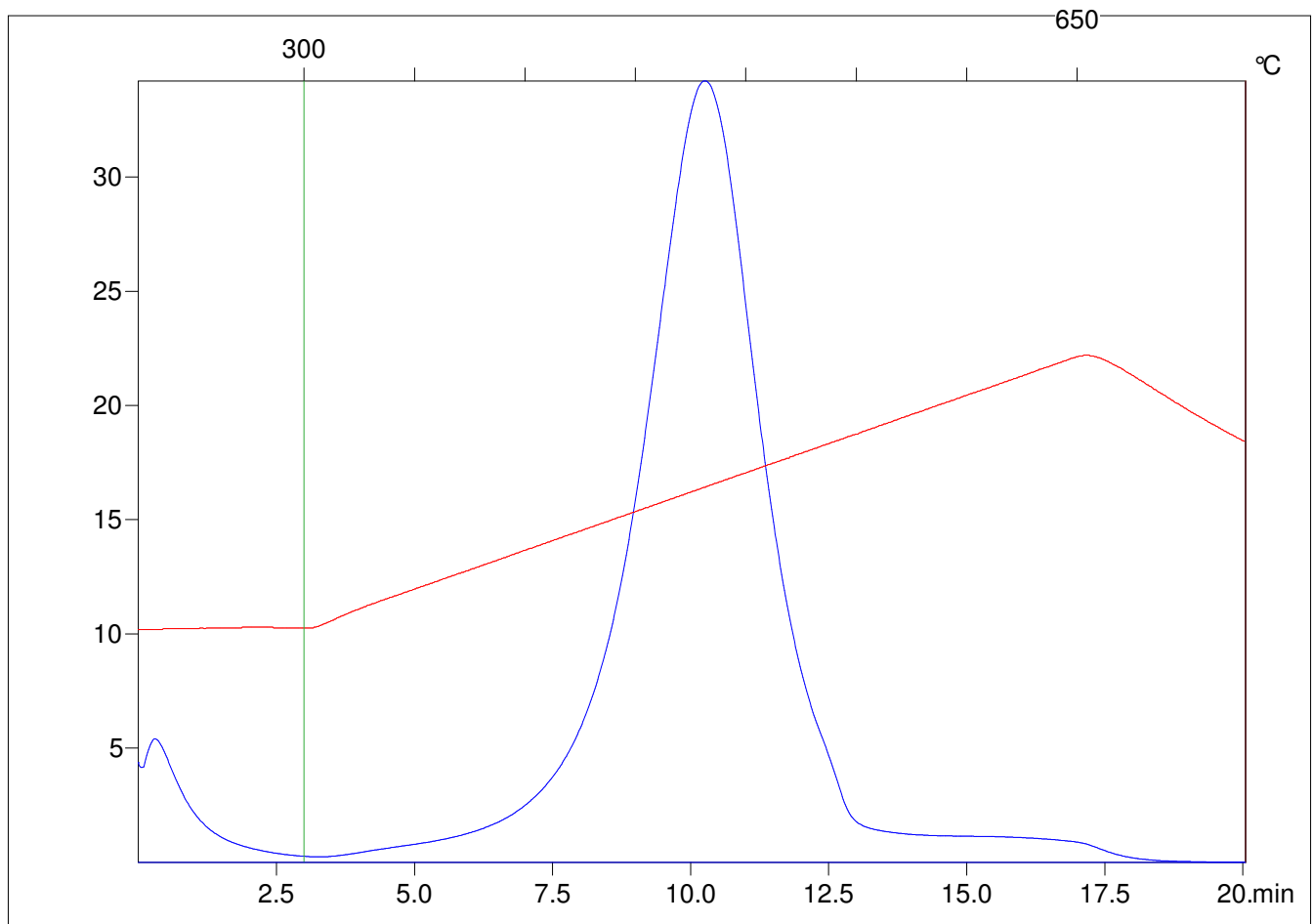
Method =Bulk Rock

Cycle=Basic

KFID(10\*9)=1444

Qty =70.4

TOC=5.07



C:\VINC\PK2\_1792\PK097.R00 : FID pyrolysis graphic

State

Pyro Status

Oxi Status